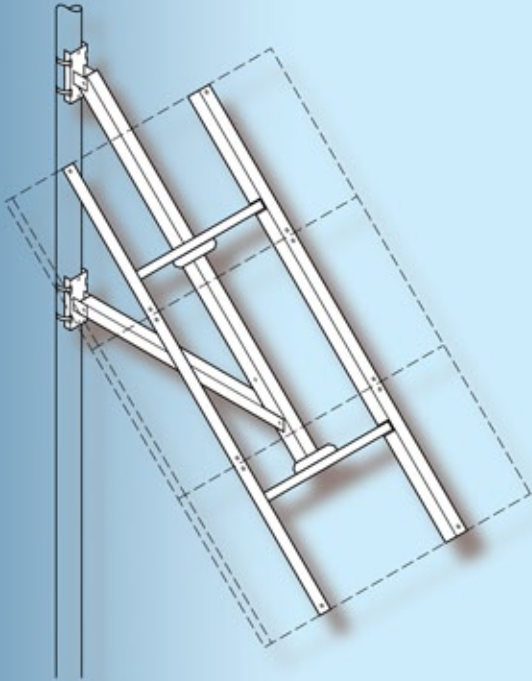


SIDE-OF-POLE MOUNTS

Photovoltaic Module Mounting Structures



chosen by professionals...

....favored by experienced installers for over 12 years



POWER-FAB products are manufactured by
DIRECT POWER AND WATER CORPORATION, ALBUQUERQUE, NM USA

Features and Specifications

POWER-FAB Side-of-Pole Mounts, manufactured by Direct Power and Water Corporation, are available in both aluminum (AL) and painted steel (PS) versions. POWER-FAB racks are known for their straightforward and rugged designs. Our racks are known to be the strongest in the industry.

We understand that the weather is not always perfect when a power system is installed; to reduce installation costs and minimize installation difficulties key features are provided. For example, pre-installed threaded nutserts are provided to reduce the hardware that must be handled during the installation. Angle adjustment indicators are provided to assure consistency. Where applicable, under-flange module clamps are used to increase adaptability. Many racks allow for the use of multiple mounting options, such as band-clamps, U-bolts, or throughbolts.

Options available include specialized mounting hardware for Rohn and other towers. Stainless steel U-bolts or full-circle U-bolts can be provided. Stainless steel bands are available for telephone poles or other structures.

ALUMINUM SIDE-OF-POLE MOUNTS

The aluminum mounting structures (AL) are manufactured from formed aluminum and structural aluminum extrusions. All formed parts are constructed from 5052-H32 aluminum. All extrusions are 6061-T6 structural alloy.

All welded parts are TIG welded. All corners are coped, edges are sanded and holes are deburred. Stainless steel mounting hardware and assembly hardware are provided with each rack. Most racks also include high-strength stainless steel band clamps.

ELEVATION ANGLE ADJUSTMENT

The tilt-angle adjustment varies with the design of both the aluminum and the steel versions. Refer to the drawings for details.

PAINTED STEEL SIDE-OF-POLE MOUNTS

The Painted Steel (PS) pole brackets, strongbacks and support struts are made of heavy gauge steel flat bar and tubing conforming to ASTM A36 and ASTM A500-Grade B. All parts are Mig welded, burrs are removed, corners are coped and edges are sanded. Steel parts are coated with a minimum of two coats of industrial urethane enamel. Module mounting rails are mill-finish 6061-T6

structural aluminum angle. Stainless steel module mounting hardware is provided with each rack. Standard rack assembly is zinc-plated Grade 5.

WINDLOADING CAPABILITY

All standard aluminum and steel models are designed and warranted to withstand windloads of 30 lbs/ft² (approximately 90 mph). Structures to withstand greater windloads are available for high-wind areas.

MOUNTING

Most POWER-FAB Side-of-Pole Mounts are attached to the pole with stainless steel band clamps (provided). Two or four clamps are used depending on the design. All Series AL-22 and PS-28 racks include band clamps for 3" to 5" O.D. poles. All other racks are supplied with clamps for 2" to 4" O.D. poles. Many other sizes are available; please specify pole size when ordering. These racks can be U-bolted or lag-bolted to poles (square or round) and to the sides of buildings or other vertical surfaces. Brackets are also available for mounting to Rohn towers and wood telephone poles.

SHIPPING

Most standard racks are shipped via UPS.

OPTIONS

- » Anodized Aluminum
- » Custom Sized Clamps
- » Tamper-Resistant Hardware
- » Combiner box mounting brackets
- » Hot-dip galvanized steel
- » Custom elevation settings
- » Brackets for trees
- » ROHN tower mounts
- » Fixed-angle mounts